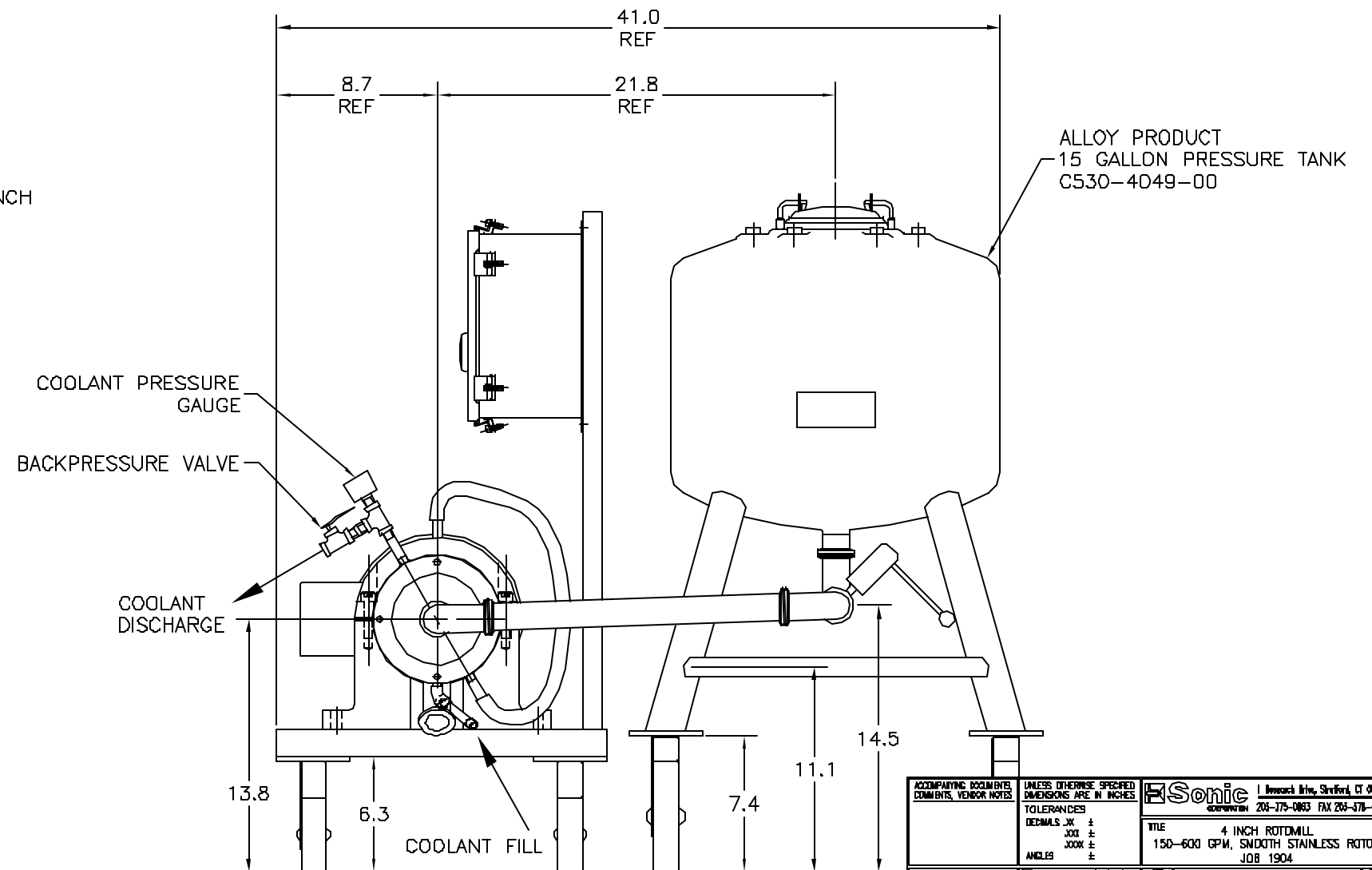
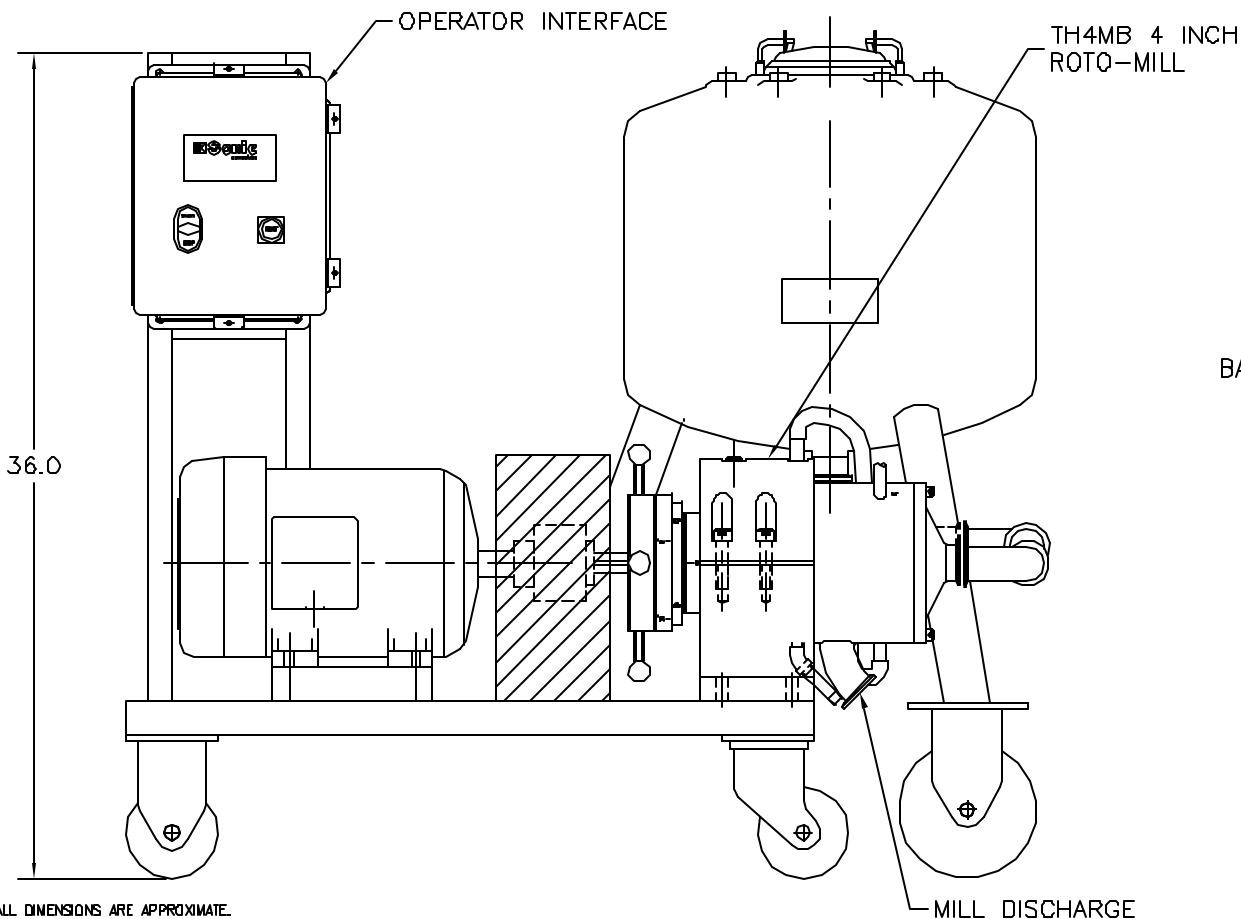
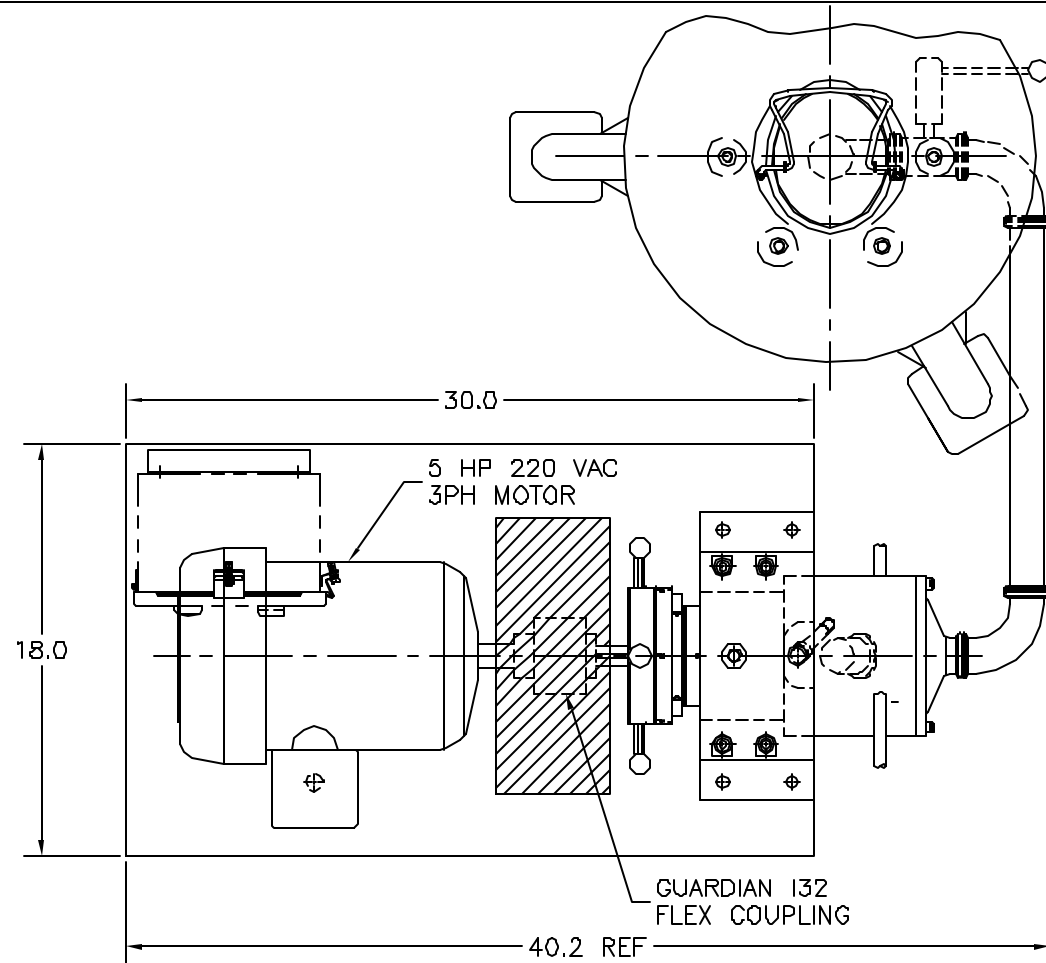


REVISIONS			
REV	DESCRIPTION	BY	DATE
A	INITIAL REVISION		



1. ALL DIMENSIONS ARE APPROXIMATE.  
NOTES:

PROPERTY INFORMATION: THE MATERIAL AND THE CONTENTS THEREOF ARE CONSIDERED THE PROPERTY OF SONIC CORPORATION AND THE INFORMATION IS UNAUTHORIZED INDIVIDUALS OR DISSEMINATION, PUBLICATION, OR COPYING THEREOF IS PROHIBITED WITHOUT PRIOR WRITTEN CONSENT BY SONIC CORPORATION, CONNECTICUT.

ACCOMPANYING DOCUMENTS: COMMENTS, VENDOR NOTES	UNLESS OTHERWISE SPECIFIED DIMENSIONS ARE IN INCHES	<b>Sonic</b>   Research, Inc., Shelton, CT 06815 203-775-0833 FAX 203-378-4978
TOLERANCES		TITLE
DECIMALS .XX ±		4 INCH ROTOMILL
XXX ±		150-600 GPM, SMOOTH STAINLESS ROTOR
ANGLES ±		JOB 1904
MATERIAL:	PM F. CS2K	DATE: 5/24/04
FINISH:	DR	DRAWING NUMBER: 1904
HEAT TREAT:	API	SCALE: 1:1 DO NOT SCALE DRAWING SHEET 1 of 1
		REV: A
		CAD NUMBER: \\job\pro\1904\1904-A-01-Adj