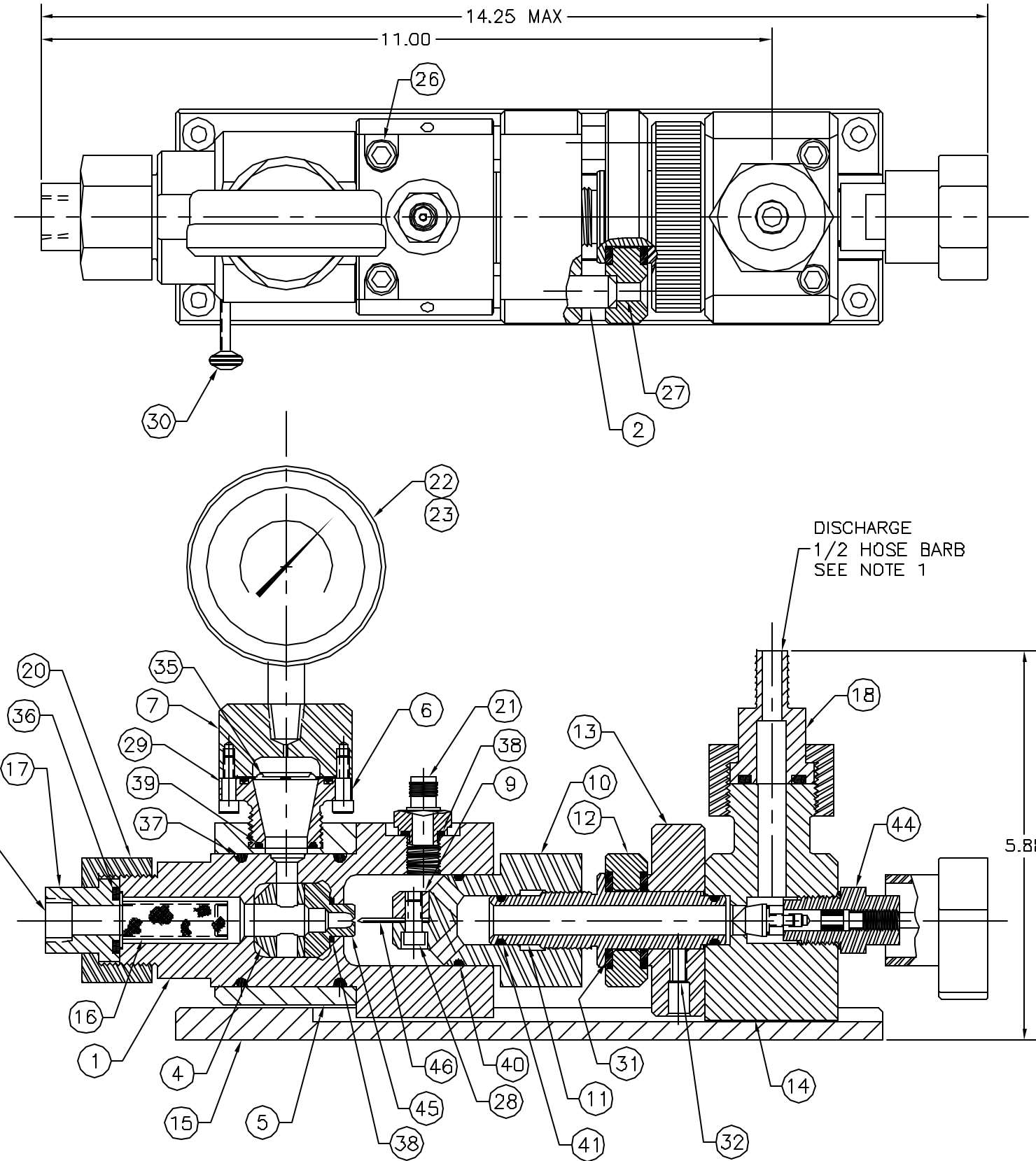


REVISIONS			
REV	DESCRIPTION	BY	DATE
A	CHANGED NOTE 1, AND OUTLET WAS 3/8 FNPT	GA	5/14/79
B	REDRAWN INCAD AND A174 WAS A COMMERCIAL PART	RC	5/15/02



NUM	REQ'D	PART NO.	DESCRIPTION	MATERIAL
1	1	A152	BODY	316 S. ST.
2	2	A103	PIN	17-4-PH
4	1	A154	ORIFICE CLAMP	316 S. ST.
5	1	A106	SLEEVE	316 S. ST.
6	1	A107	BOTTOM SEAL	316 S. ST.
	*	A107HP	HP BOTTOM SEAL	316 S. ST.
7	1	A108	TOP SEAL	304 S. ST.
	*	A108HP	HP TOP SEAL	304 S. ST.
9	1	A110	BLADE CLAMP	316 S. ST.
10	1	A111	BLADE HOLDER	316 S. ST.
11	1	A112	CALIBRATOR	316 S. ST.
12	1	A113	CALIBRATOR GUIDE	304 S. ST.
13	1	A114	WHEEL	304 S. ST.
14	1	A115	TUNING VALVE BODY	316 S. ST.
15	1	A116	BASE	304 S. ST.
16	1	A117	STRAINER	316 S. ST.
17	1	COMM	CONNECTION, 3/8 FNPT	316 S. ST.
18	1	A119	CONNECTION, 1/2 HOSE BARB	316 S. ST.
20	2	ST2016	UNION NUT	304 S. ST.
21	1	IN1027	PROBE, PV-4	316 S. ST.
22	1	COMM	PRESSURE GAUGE	
23	1	COMM	SNUBBER	
26	4	COMM	SHCS, 5/16-18 X 2.75 LG	304 S. ST.
27	2	COMM	FHCS, 1/4-20 X .75	304 S. ST.
28	1	ST1008	SHCS, 1/4-20 X .63 LG	316 S. ST.
29	4	COMM	SHCS, #10-24 X .63 LG	304 S. ST.
30	1	COMM	THUMB SCREW, #10-24 X .63 LG	304 S. ST.
31	2	COMM	BEARING, THRUST	
32	2	ST1005	SHSS, OV PT, 1/4-20 X .38 LG	304 S. ST.
35	1	SL2008	BELLOPHRAGM DIAPHRAGM	VITON
36	2	SL1031	O-RING, 2-210	VITON
37	2	SL1022	O-RING, 2-224	VITON
38	2	SL1002	O-RING, 2-014	VITON
39	1	SL1014	O-RING, 2-116	VITON
40	1	SL1030	O-RING, 2-123	VITON
41	2	SL1029	O-RING, 2-113	VITON
44	1	A174	TUNING VALVE ASSEMBLY	316 S. ST., TEPHLON
45	1	A153	ORIFICE	304 S. ST. OR T.C.
46	1	A109	BLADE	17-4-PH OR T.C.

3. WHEN ORDERING SPARE ORIFICES, THE COMPLETE PART NUMBER APPEARS ON THE NOSE OF THE ORIFICE: A153-003 IDENTIFIES S. ST. ORIFICE WITH AN OPENING AREA OF 0.003 SQ IN.
2. SEALS AVAILABLE IN VITON ONLY, CONSULT FACTORY IF OTHER ELASTOMERS ARE DESIRED
1. CUSTOMER TO SPECIFY IF DIFFERENT CONNECTIONS ARE DESIRED.

NOTES:

PROPRIETARY INFORMATION: THIS MATERIAL AND THE CONTENTS THEREOF ARE CONSIDERED THE PROPERTY OF SONIC CORPORATION AND THE DISCLOSURE TO UNAUTHORIZED INDIVIDUALS OR DISSEMINATION, PUBLICATION, OR COPYING THEREOF IS PROHIBITED WITHOUT PRIOR WRITTEN CONSENT BY SONIC CORP., STRATFORD, CONNECTICUT.

ACCUMULATING REQUINUES DIMENSIONS ARE IN INCHES TOLERANCES: DECIMALS .XX ± .XXX ± .XXXX ± ANGLES ±	Sonic Research Inc., Stratford, CT 06610 203-378-0863 FAX 203-378-4078
MATERIAL: M/N R. COZK FINISH: M/R R. ROSENBERG DRW A. D'URSO DATE: 7/15/02 8/14/70	TITLE: MONO-FEED SONOLATOR MODEL A SONOLATOR ASSEMBLY DRAWING DRAWING NUMBER: A151 REV: B SCALE: 1.00 DO NOT SCALE DRAWING SHEET 1 of 1 CAD NUMBER: \Bld Parts\Sonolator\A151-A-01-B.dwg